



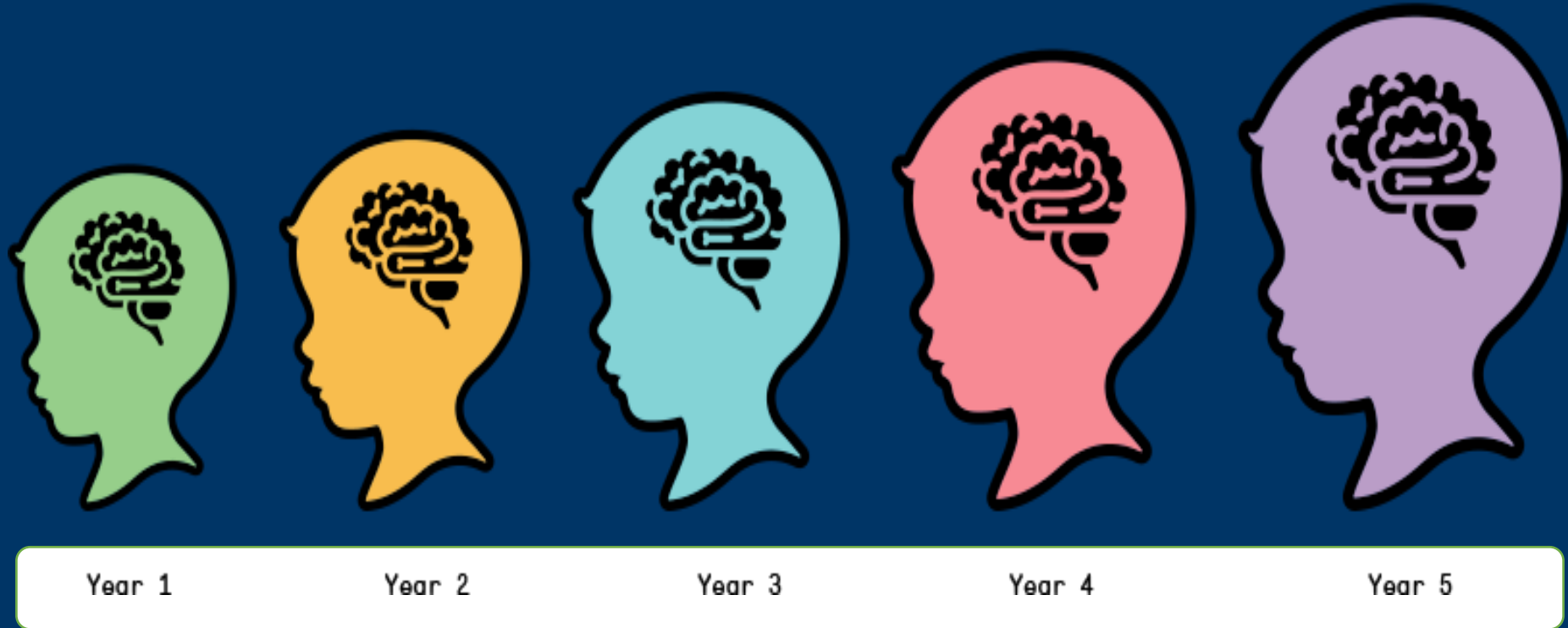
ALABAMA DEPARTMENT OF
**Early Childhood
Education**

United Way Bold Goals Collective Impact Literacy Initiative

**Secretary Barbara Cooper, Ph.D.
September 8, 2021**



Our Why?



Early Learning Experiences Matter

Alabama Early Literacy Policy

AL Literacy Act 2019

- **ALSDE Literacy Framework**
- **Scientific Based Reading Instruction**
- **Higher Education Coursework for preservice teachers**
- **Student Assessments**

Alabama Early Learning Initiatives

Alabama First Class Pre-K

Alabama Standards for Early Learning Development: ASELD Domains of Learning

LETRS Trainings for over 2000 ECE teachers

Alabama Kindergarten Inventory of Developing Skills: AlaKiDS

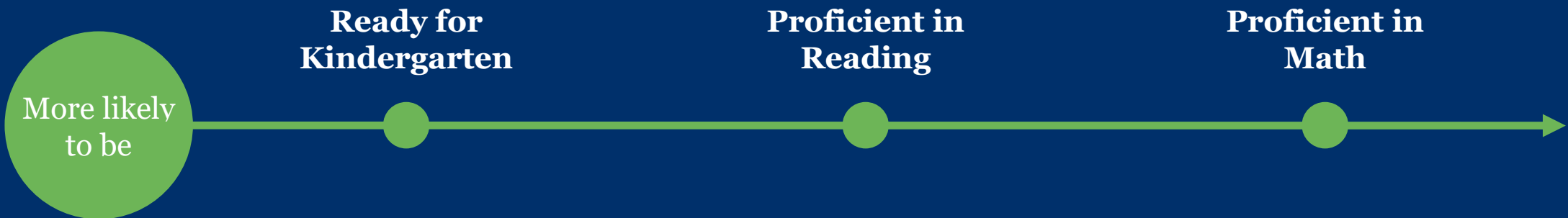
AL Family Central

WIDA Early Years

Strong Start, Strong Finish

Governor Ivey's initiative focuses on ensuring children Pre-K through Grade 3 have strong early learning educational experiences

ACGLR Governor Kay Ivey Call to Action for local Children Policy Councils





ALABAMA CAMPAIGN *for* Grade-Level Reading

RECOMMENDATIONS TO GOVERNOR KAY IVEY





One out every two 4th graders failed to reach proficiency on the state's reading assessment²



66% of 4th graders living in poverty failed to reach proficiency on the state's reading assessment³

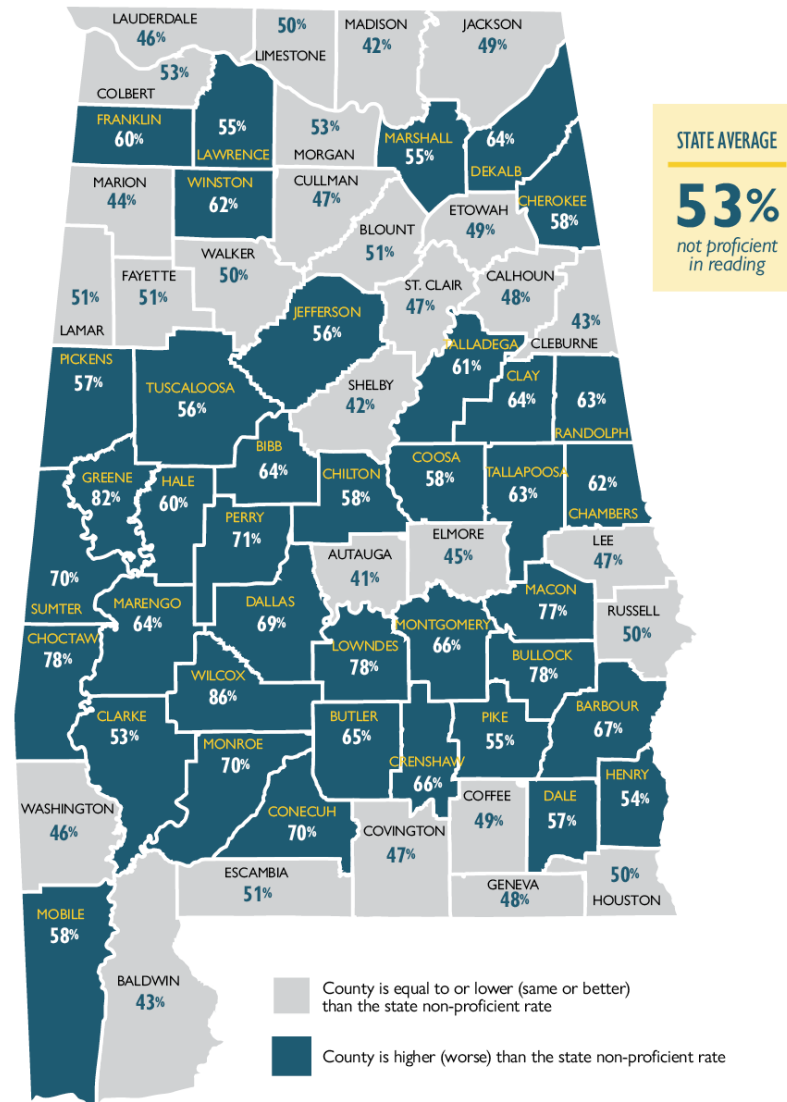
1 State Achievement-Level Results (National Assessment of Education Progress, 2019)

2 Alabama State Department of Education, 2018-2019 Scantron test results

3 Alabama State Department of Education, 2018-2019 Scantron test results

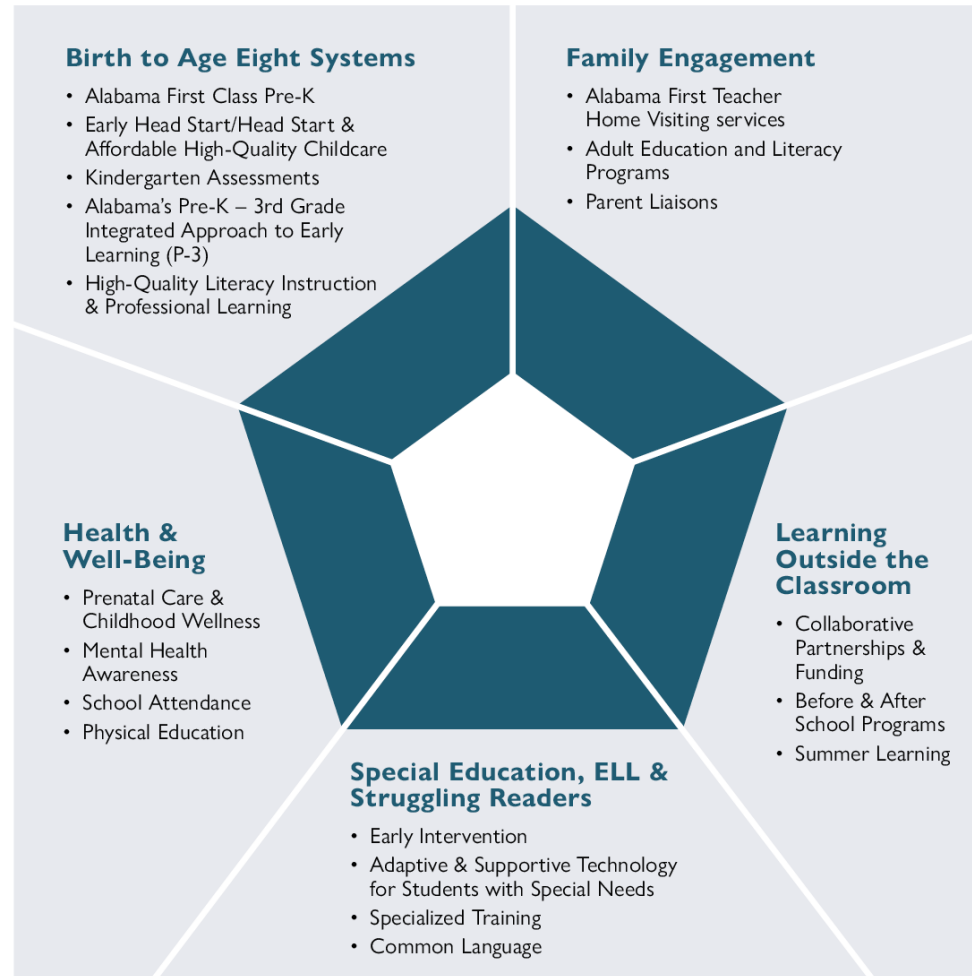
Percentage of Alabama 4th Grade Students Not Proficient in Reading in 2019¹

BY COUNTY



¹ Alabama State Department of Education, 2018-2019 Scantron test results

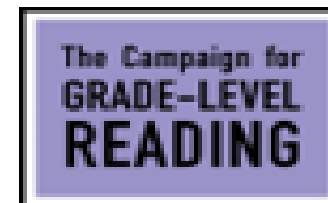
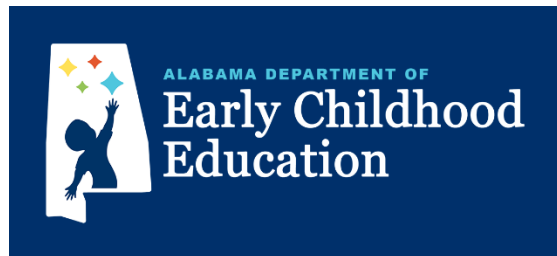
ACGLR Measures of Success Framework



Alabama Campaign for Grade Level Reading

Children's Policy Council Pilot Project

Sample County Prioritization Guide



Macon County Collective Impact Initiatives

PRIORITY AREAS

- **Birth to Eight Systems**
- **Family Engagement**
- **Special Education and Struggling Reader**

STRATEGIES

- 1. Reading curriculum developed for early education programs in Macon County.**
- 2. Increase home visits by current Home Visiting programs**
- 3. Encourage parents to participate in Adult Education to improve adult literacy**
- 4. Work with Community programs to reinforce reading.**
- 5. Provide financial support for two book mobiles to travel through Macon county to bring books and reading opportunities to children and families.**

Alabama Early Learning Collective Impact Support

- **CPC Key Leadership**
- **Data Informed and Data Driven Efforts**
- **Targeted Outreach for Pre-K in pilot counties**
- **Intentional support through the ADECE and the National CGLR**
- **Birth to Grade 12 Advisor—seeking additional partnerships**
- **Professional Development**
- **Ongoing evaluation of progress**
- **Support through other ADECE efforts: PDG B-5 Focus on Early Years, QRIS**
- **Born Ready University Parenting Program**
- **Focus on the Birth to Age 8 Continuum**



ALABAMA DEPARTMENT OF

Early Childhood
Education

Higher Education Collaboration

Alabama Early Learning Collective Impact Support

Reach Out and Read (Implemented)

Bama Talks- LENA Start/LENA Grow (Planned)

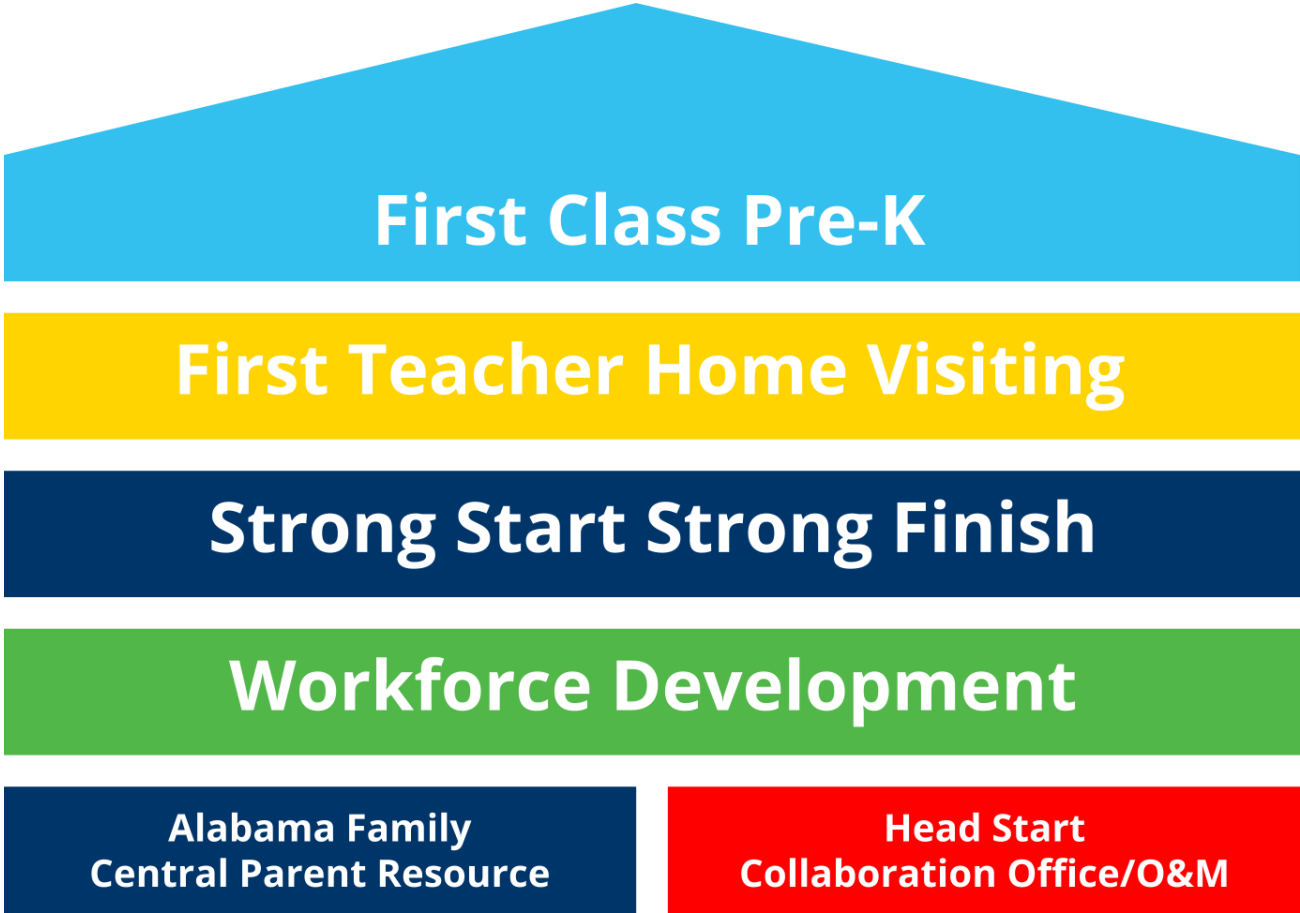
Born Ready University (Planned)

Dolly Parton Imagination Library (Exploring)

Next Steps:

Using the data to identify support for Children Policy Councils in other counties with their Grade Level Reading efforts.

Alabama Department of Early Childhood Education



Birth to Age 8 Alignment



ADECE Collective Impact Next Steps

- **Early Literacy**
- **Dismantle silos for greater collaboration and coordination with agencies and stakeholders**
- **Generational Poverty**
- **Program Access**
- **Early Childhood Workforce**
- **Data Collection and Systems**
- **Developmental Screening and Trauma Informed Practices**
- **Grow partnerships**
- **Strengthen communication internally and externally**

An aerial photograph of a school campus, likely a high school, featuring several large, interconnected buildings with grey roofs and white walls. The campus is surrounded by a dense forest of trees, and a parking lot with several cars is visible in the foreground. The sun is low in the sky, creating a warm, golden glow and long shadows across the scene. The title 'STARTING AT ZERO' is written in large, bold, white, sans-serif capital letters across the upper half of the image.

STARTING AT ZERO

Reimagining Education in America

<https://startingatzerofilm.com/we-knew-it-science-confirms-it/>

Thank you!

children.alabama.gov



ALABAMA DEPARTMENT OF
**Early Childhood
Education**

